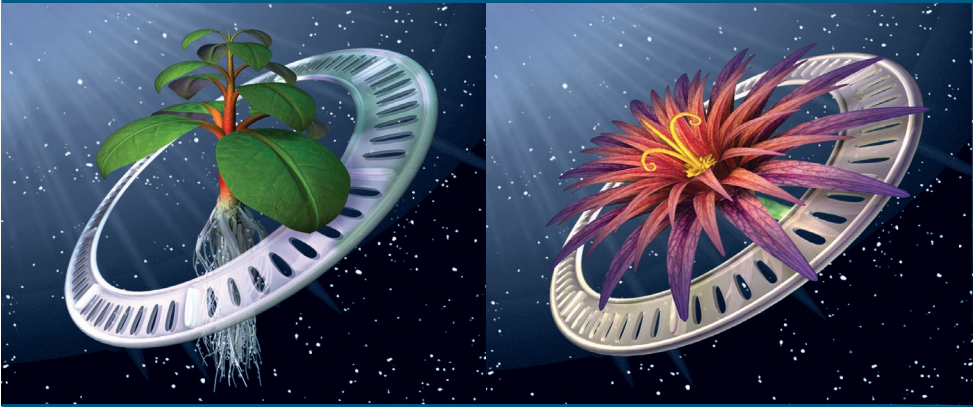


FLORA NOVA®



Biopole
32500 FLEURANCE - FRANCE
Tel. : +33 (0)5 62 06 08 30



FOR HYDROPONICS
AND SOIL



FloraNova

APPLICATION CHART

IN SOIL

In ml/10L		18 hours of light			12 hours of light							
		1	2	3	4	5	6	7	8	9	10	...
Week												
		Seeds	Cuttings	Veg.	Flowering & Fruiting							
SIMPLE	FloraNova Grow	see text	3	3	6	7	4					
	FloraNova Bloom	see text					3	7	7	7	7	
	Ripen		10 last days for faster flowering								60	
EXPERT	Bio Roots		2		Root activator							
	Bio Protect		5 ml/L		5 ml/L		5 ml/L	Immune system activator. Foliar spray once a week				
	Bio Bloom						2	Flowering activator				
	Diamond Nectar		15			Strengthens the root system Improves the plant's general health						
	Mineral Magic		1 coffee spoon, sprinkled at the foot of the stem Increases the resistance to insects and disease. Stabilizes the pH									

Regularly adjust your water's pH between 5.5 to 6.5
To stabilize your pH, use our liquid pH Down, as it contains organic buffers.

FLORANOVA - STRENGTH, SIMPLICITY & PERFORMANCE

FloraNova represents a breakthrough in fertilizer technology. It is a super concentrated nutrient (1 L = 1,4 kg), in the form of a thick liquid. It offers the grower the strength of a dry concentrate and the ease of a liquid. Thanks to the fulvic and humic acid extracts it contains, it facilitates an excellent absorption of its nutrition by the plant.

FloraNova is an exhaustive nutrient in 2 bottles only, one for growth and one for fruiting and flowering.

Use **FloraNova Grow** during the vegetative stage, to increase structural and foliar growth.

Use **FloraNova Bloom** for the flowering and fruiting stages, to promote a vigorous and abundant crop.

Add **Ripen** during the last 10 days, to increase flowering and fruiting.

A very small amount of FloraNova, mixed with fresh water, will provide your plants with proper nutrition in soil, hydroponics and soilless cultivation

For seeds (all substrates):

- As soon as the first roots appear, apply the dosage for «cuttings», in the application chart (EC = 0.4 - 0.6).
- As soon as growth resumes, apply the dosage for «vegetative» (EC = 1.6 - 2.)
- For young plants, use an EC = 1.0 - 1.3.

For pure growth, and for mother plants:

- Apply the same dosage as for the first week of flowering.

As a general rule:

- To optimize availability of mineral salts in the solution, adjust your pH level between 5.5 and 6.5 before adding the nutrient. Readjust if needed and check regularly. Use our liquid pH Down as it contains organic buffers to stabilize the pH.
- FloraNova is adapted to all waters, hard and soft. Only when your water is very high, replace your solution regularly (every 15 to 20 days), to avoid nutrient imbalance.

Shake and stir well while using :

Due to its extreme concentration, and to prevent from possible salt precipitation, shake FloraNova well before using it, and mix it thoroughly while pouring it in the water.

Pour each component separately, and rinse your measure between each serving.



FloraNova

APPLICATION CHART

AEROPONICS, COCONUT FIBRE,
GROROX, ROCKWOOL ...

In ml / 10L	18 hours of light					12 hours of light						
	Week 1	2	3	4	5	6	7	8	9	10	...	
	Cuttings		Veg.	Flowering & Fruiting								
FloraNova Grow	6	6	12	14	8	Change water					Change water	
FloraNova Bloom					6		14	14	14	14		
Ripen	10 last days for faster flowering										60	
Bio Roots	2		Root activator									
Bio Protect		5 ml/L		5 ml/L		5 ml/L	Immune system activator. Foliar spray once a week					
Bio Bloom					2					Flowering activator		
Diamond Nectar		15			Strengthens the root system Improves the plant's general health							
Mineral Magic		1 coffee spoon, sprinkled at the foot of the stem Increases the resistance to insects and disease. Stabilizes the pH										

For more information : eurohydro.com or info@eurohydro.com